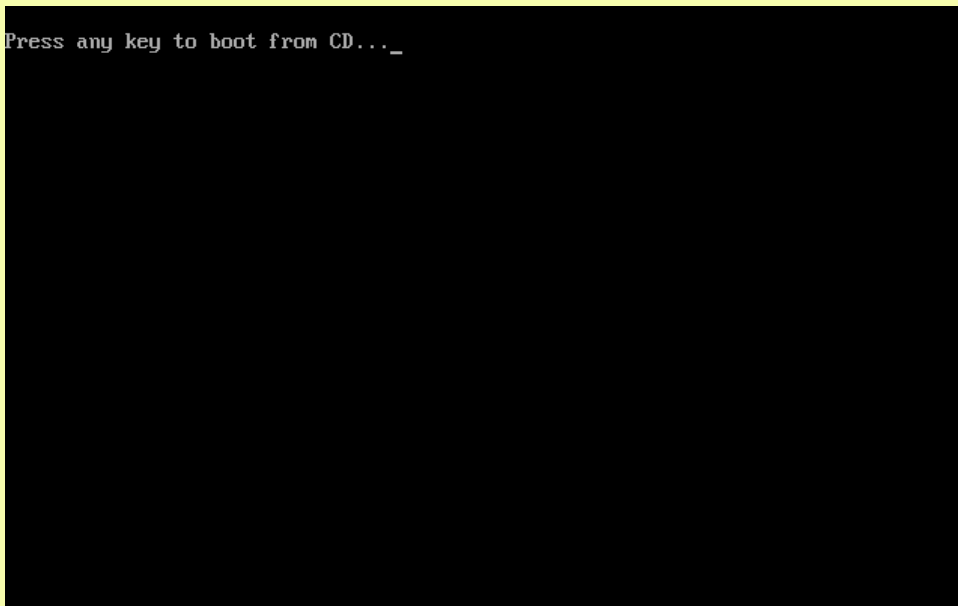
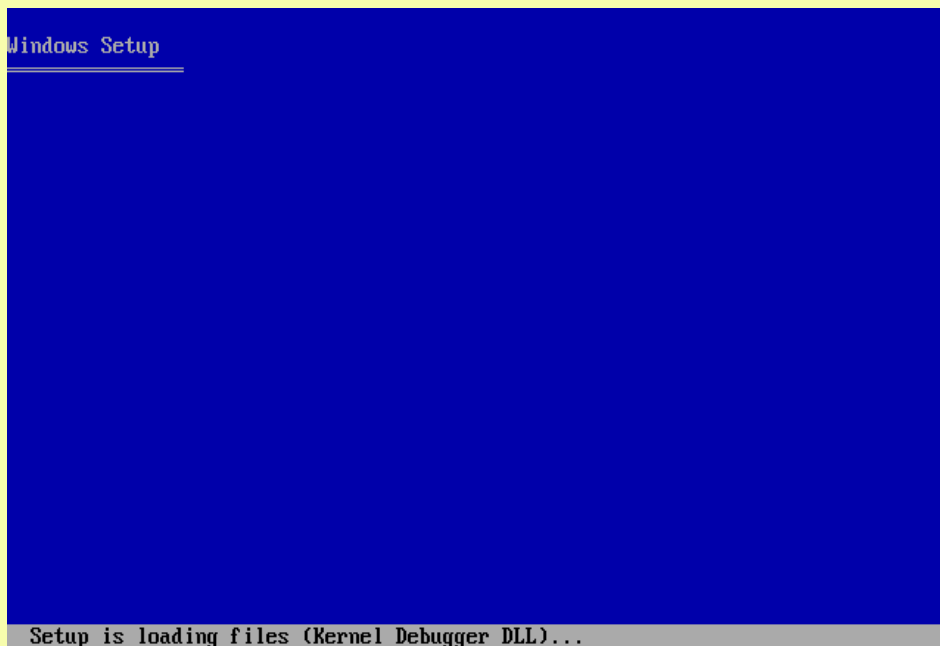


1. μ μ Bios (Delete). μ μ boot dvd/cd-drive . μ μ μ ... μ μ
2. μ cd Windows xp cd/dvd drive μ .
3. μ μ boot cd. μ ( ) .



4. μ .



5. μ menu μ  
Windows xp. μ Enter μ .

```
Windows XP Professional Setup
-----

Welcome to Setup.

This portion of the Setup program prepares Microsoft(R)
Windows(R) XP to run on your computer.

• To set up Windows XP now, press ENTER.
• To repair a Windows XP installation using
  Recovery Console, press R.
• To quit Setup without installing Windows XP, press F3.

ENTER=Continue R=Repair F3=Quit
```

6. μ μ μ Windows Xp Lincensing Agreement,  
μ μ μ μ F8.

```
Windows XP Licensing Agreement
-----

Microsoft Windows XP Professional
END-USER LICENSE AGREEMENT

IMPORTANT-READ CAREFULLY: This End-User
License Agreement ("EULA") is a legal agreement between you
(either an individual or a single entity) and Microsoft
Corporation for the Microsoft software product identified above,
which includes computer software and may include associated
media, printed materials, "online" or electronic documentation,
and Internet-based services ("Product"). An amendment or
addendum to this EULA may accompany the Product. YOU AGREE TO BE
BOUND BY THE TERMS OF THIS EULA BY
INSTALLING, COPYING, OR OTHERWISE USING THE
PRODUCT. IF YOU DO NOT AGREE, DO NOT INSTALL
OR USE THE PRODUCT; YOU MAY RETURN IT TO YOUR
PLACE OF PURCHASE FOR A FULL REFUND.

1. GRANT OF LICENSE. Microsoft grants you the following rights
provided that you comply with all terms and conditions of
this EULA:

* Installation and use. You may install, use, access,
display and run one copy of the Product on a single
computer, such as a workstation, terminal or other device
("Workstation Computer"). The Product may not be used
by more than two (2) processors at any one time on any

F8=I agree ESC=I do not agree PAGE DOWN=Next Page
```

7.

Windows Xp.  
partitions ..

### Windows XP Professional Setup

The following list shows the existing partitions and unpartitioned space on this computer.

Use the UP and DOWN ARROW keys to select an item in the list.

- To set up Windows XP on the selected item, press ENTER.
- To create a partition in the unpartitioned space, press C.
- To delete the selected partition, press D.

15360 MB Disk 0 at Id 0 on bus 0 on atapi [MBR]

C: Partition1 [FAT32] 15359 MB < 15355 MB free>

ENTER=Install D=Delete Partition F3=Quit

8.

D partition(  
back-up,  
cd dvd). T Windows Setup  
partition μ Enter.

### Windows XP Professional Setup

The partition you tried to delete is a system partition.

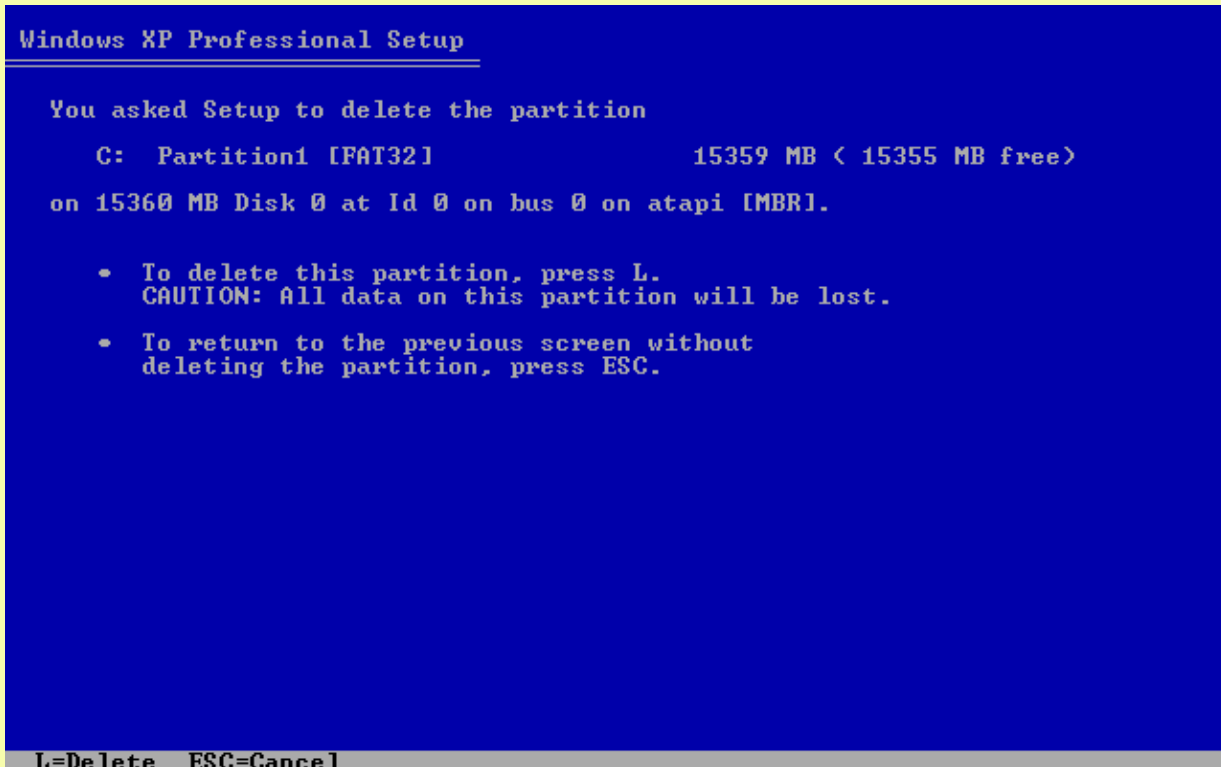
System partitions may contain diagnostic or hardware configuration programs, programs to start operating systems (such as Windows XP), or other manufacturer-supplied programs.

Delete a system partition only if you are sure that it contains no such programs or if you are willing to lose them. Deleting a system partition may prevent your computer from starting from the hard disk until you complete installation of Windows XP.

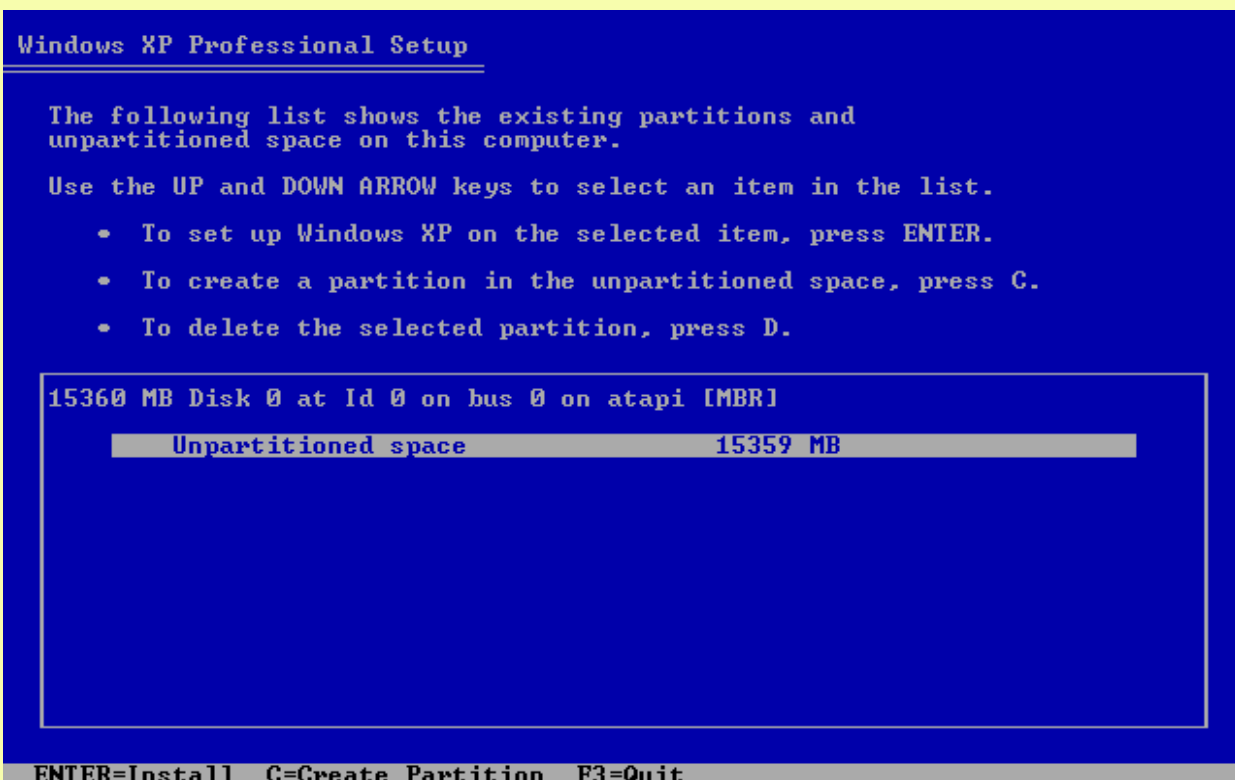
- To delete this partition, press ENTER. Setup will prompt you for confirmation before deleting the partition.
- To go back to the previous screen without deleting the partition, press ESC.

ENTER=Continue ESC=Cancel

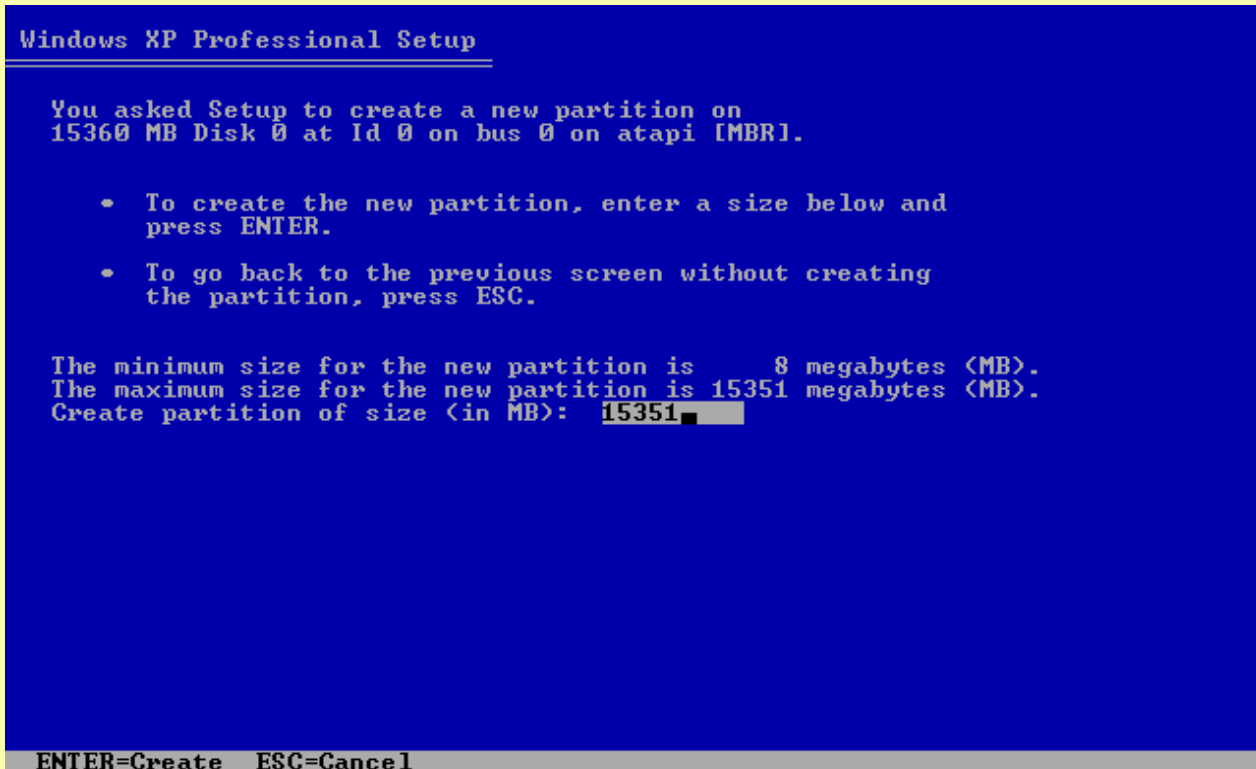
9. μ μ L. μ



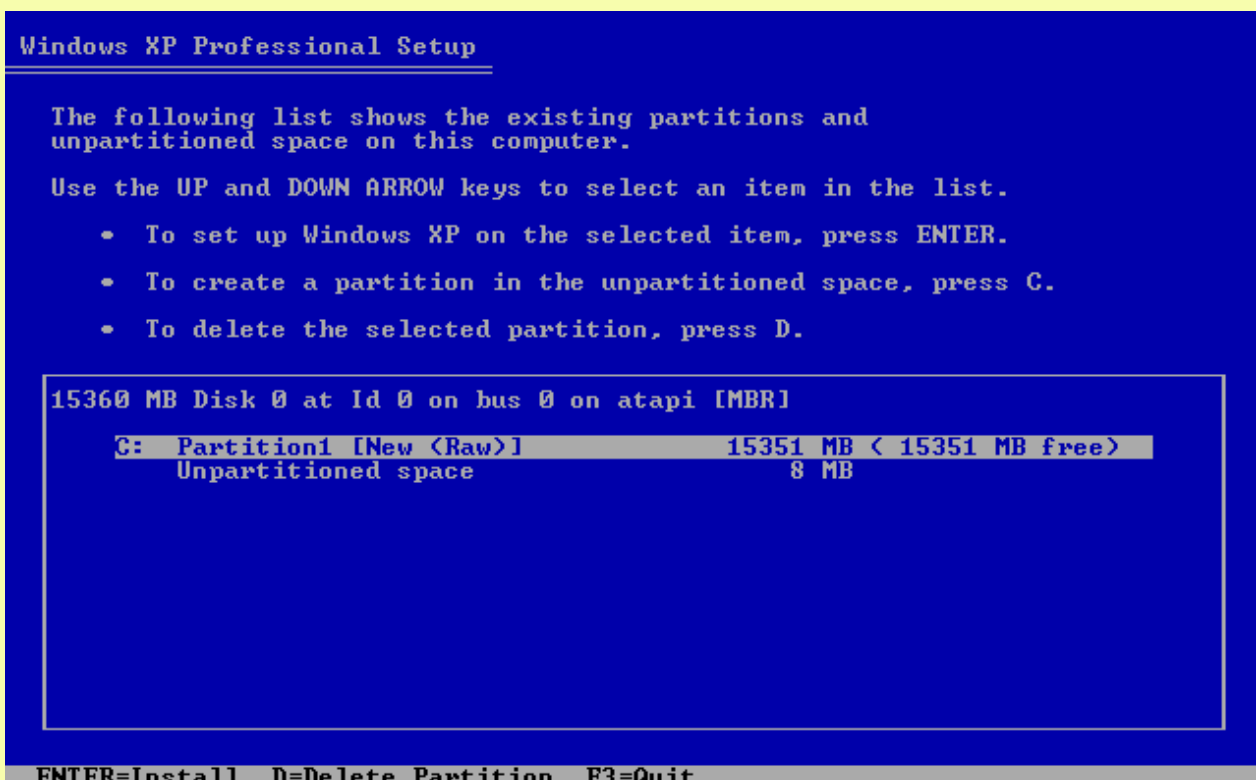
10. μ μ μ ( μ partitions  
) μ μ Unpartitioned space μ  
μ μ C μ  
partition.



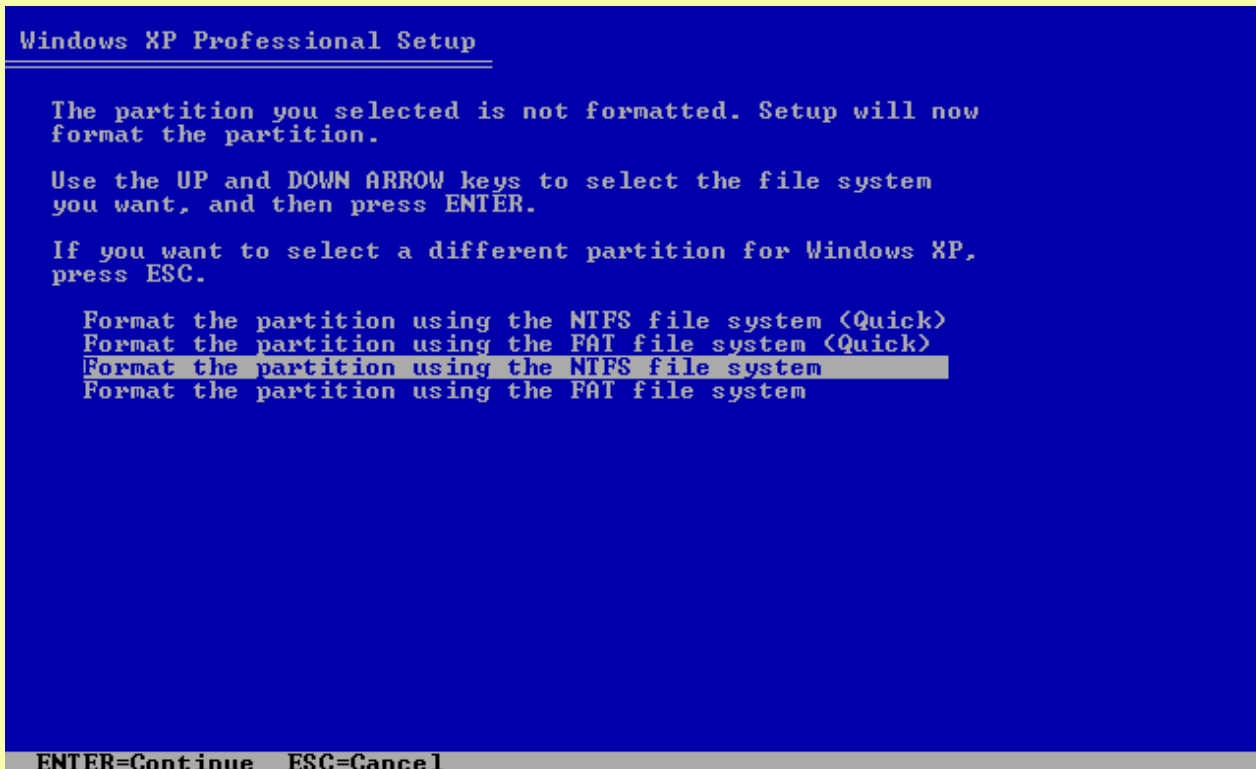
11. To windows setup μ μ partition, μ Enter  
μ ...



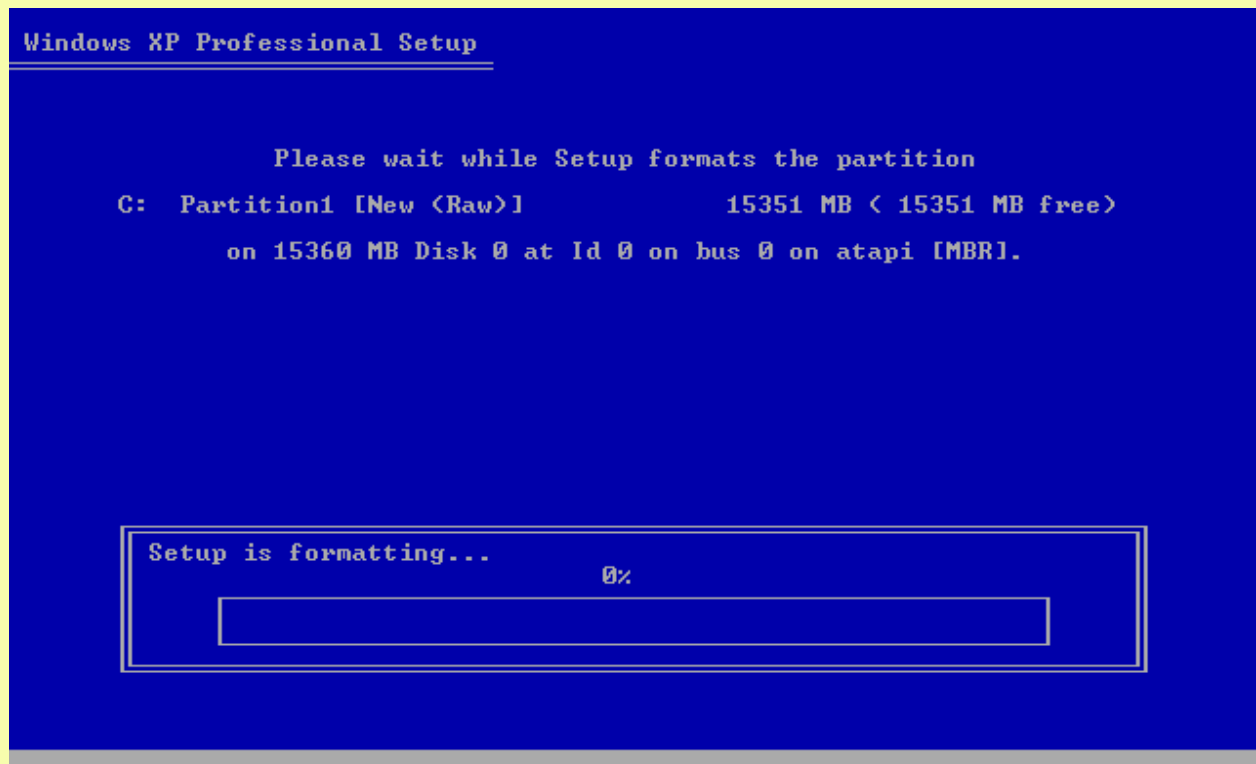
12. μ μ μ μ partitions( C:).  
μ partition μ Windows xp μ  
Enter.



13. File system (quick). Enter ... NTFS file system



14. Windows setup format partition , μ

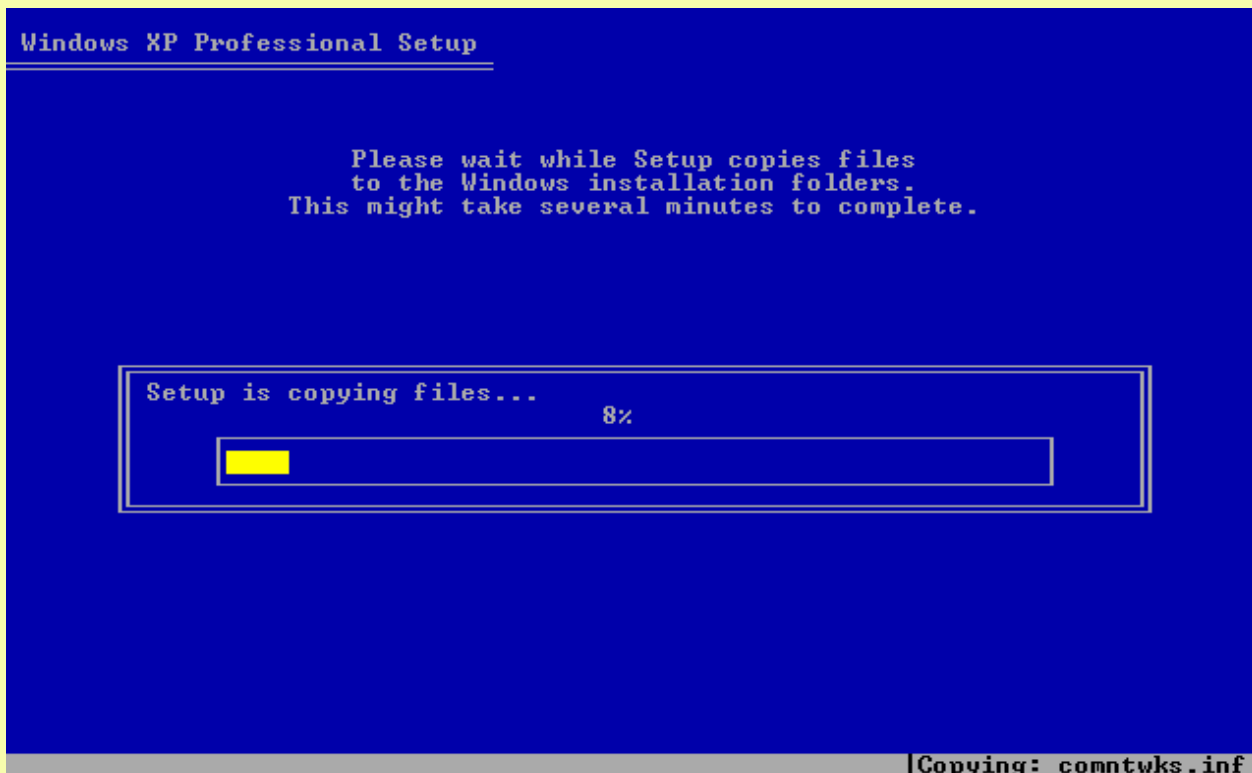


15. windows setup

Windows xp.

cd

μ .



16.

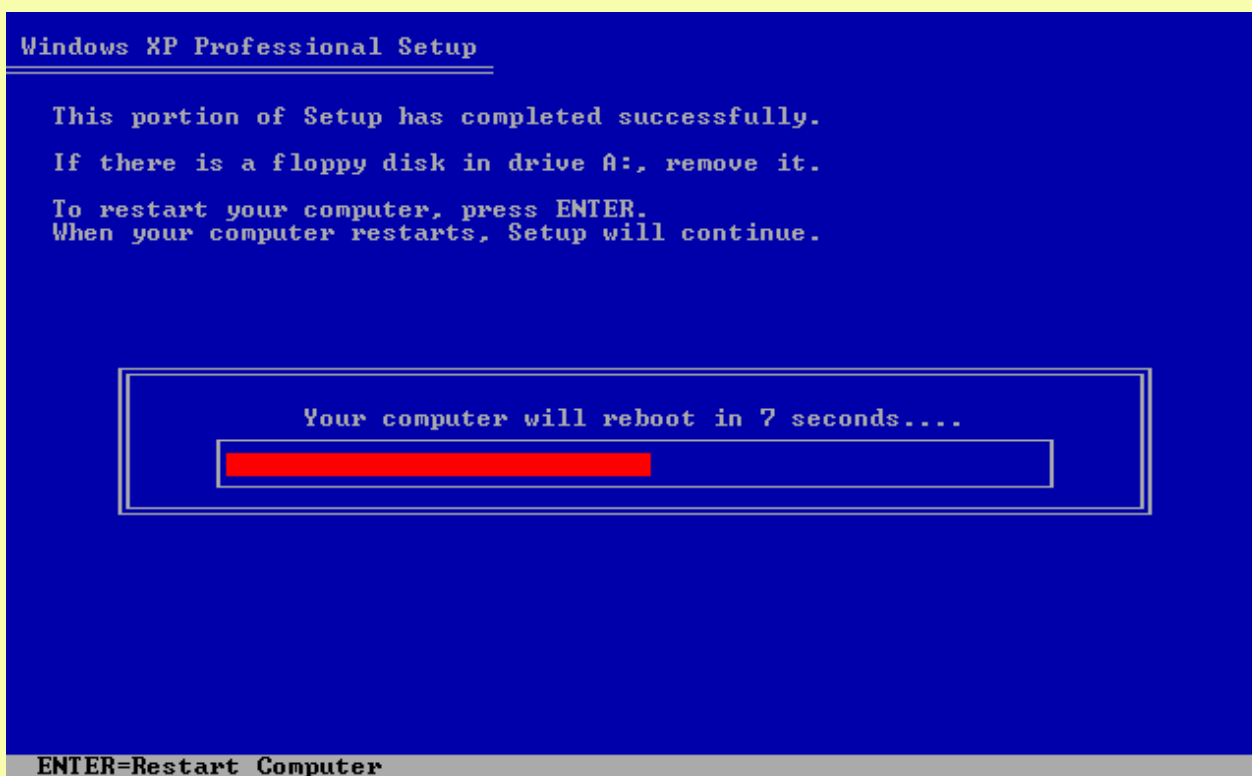
Windows setup

restart

restart

μ .

μ 10



17.

Windows Xp.

40-60

μ μ

μ μ

serial number.

